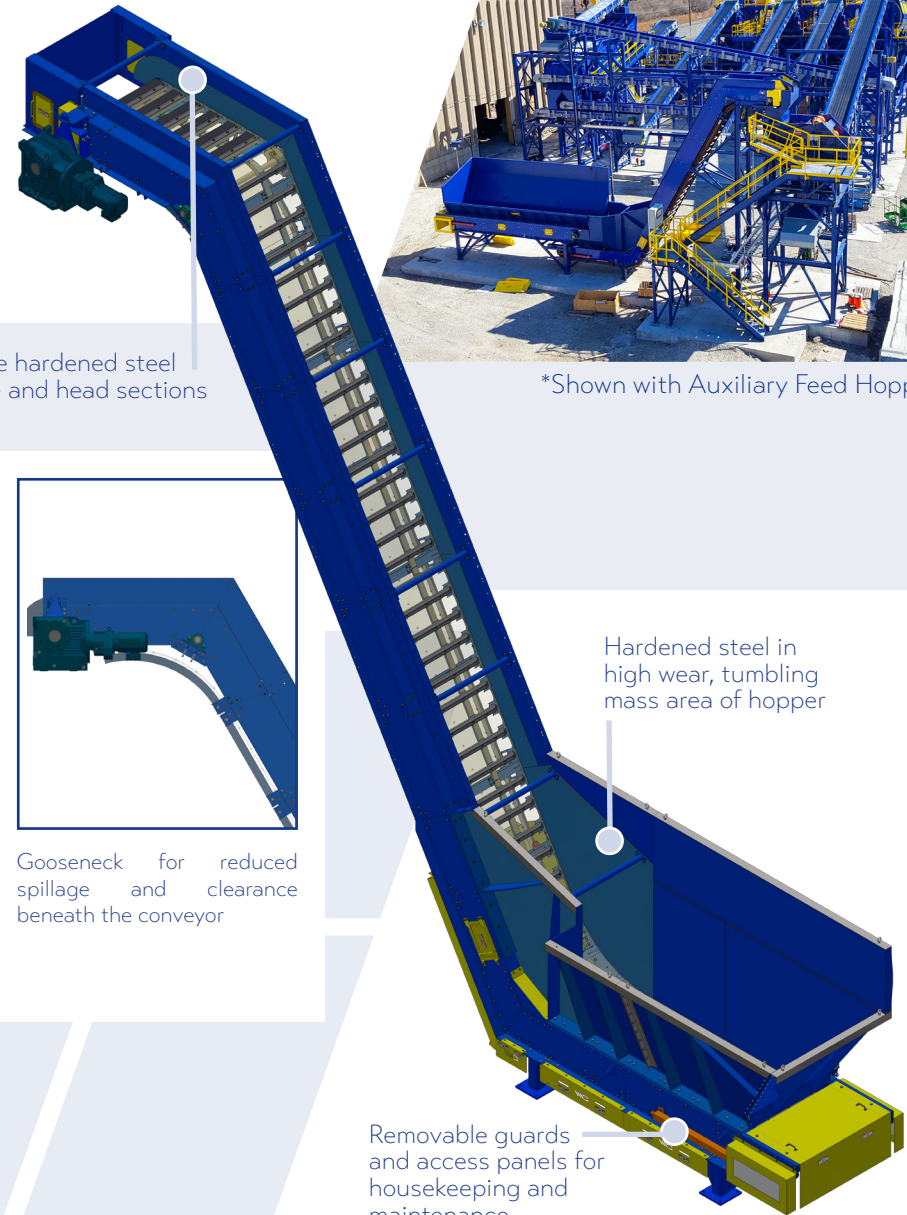


Tumbleback Feeder



WENDT's unique portfolio of configurable batch feeding systems are specifically built to handle raw, unsized automobile shredder residue (ASR) with pokers and oversized material removed. Our systems deliver superior separation performance with a consistent, volumetrically controlled flow of feedstock.

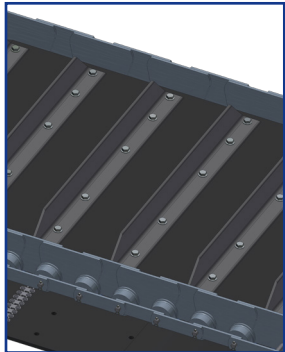
- Modular design with standard options for quick turnaround time
 - 2 head section length options
 - 2 tail section length options
 - Hoods optional
- Multiple heights from 20 - 48 feet
- 10 - 25 TPH capacity with Integrated Batch Feeder option
- 25 - 70 TPH capacity with Auxiliary Feed Hopper option



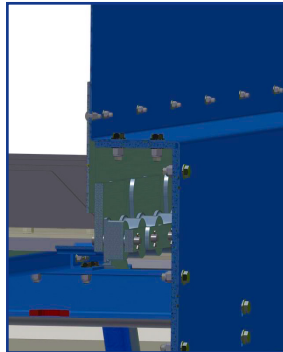
Bolt-in, replaceable hardened steel liners along incline and head sections

*Shown with Auxiliary Feed Hopper

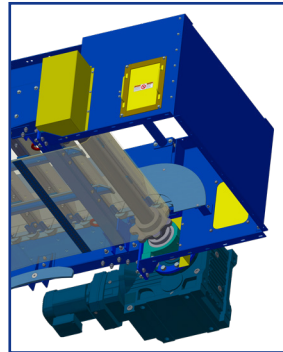
FEATURES



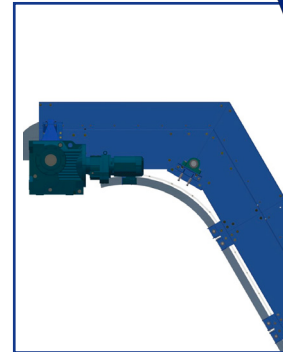
Fully guided 48" dual chain belt with 5" steel cleats standard



Heavy-duty chain with welded steel sidewalls to prevent leakage and minimize infiltration of fugitive particles into the chain area



Standard head configuration allowing for variety of bolt on chute options



Gooseneck for reduced spillage and clearance beneath the conveyor

Hardened steel in high wear, tumbling mass area of hopper

Removable guards and access panels for housekeeping and maintenance

Tumbleback Feeder Specifications

FEEDER OPTIONS



Integrated Batch Feeder



Auxiliary Feed Hopper



16 Cubic Yard Vibratory Batch Feeder



40 Cubic Yard Cat Track Feeder

| | |
|---------------------------|--|
| POWER / CONTROLS | POWER REQUIREMENTS: 460 V (U.S.), 575 V (Canada), 3-Phase, 60 Hz The drive is sized per application, not to exceed 30 HP VFD OPTION: Highly recommended for throughput tunability HOPPER SENSOR OPTION: Level sensor device to control rate of feed or notify operator when hopper empties |
| DIMENSIONS | BELT WIDTH: 48 in DISCHARGE HEIGHT: Configurable in 4 ft increments from 20 ft to 48 ft |
| SPECIFICATIONS | INTEGRATED BATCH FEEDER CAPACITY: 9 cubic yds AUXILIARY FEED HOPPER CAPACITY: 16+ cubic yds BELT: Chain Driven, 4 Ply MOR with 5 in angle iron cleats |
| FRAME CONSTRUCTION | Heavy-duty structural steel and plate frame with fabricated plate load hopper |

